

110



St. Leonards Road, Windsor
£500,000

OSBORNE HEATH



Downstairs there are refurbished wooden floors, a modern kitchen and dining room, and a large living room with space for a study set up and doors leading out to the garden.

Upstairs there are two double bedrooms and a family bathroom.

Outside there is a courtyard, lawned garden area and access to the garage.

Windsor has a wide range of shops and restaurants as well as the Castle, Great Park, Racecourse and Legoland. Nearby train stations include Windsor & Eton Central and Windsor & Eton Riverside where trains run to London Paddington (via Slough) and London Waterloo. Windsor is also convenient for the M4, M25 and Heathrow Airport. The area also has a good selection of state, private and international schools, including Trevelyan Middle School, which is almost opposite the property.

St. Leonards Road

Windsor

- Two Double Bedrooms
- Two Receptions
- Modern Kitchen
- Period Features
- Garage
- South Facing Garden
- Close To Great Park

Council Tax band: C

Tenure: Freehold

EPC Energy Efficiency Rating: D

EPC Environmental Impact Rating: D

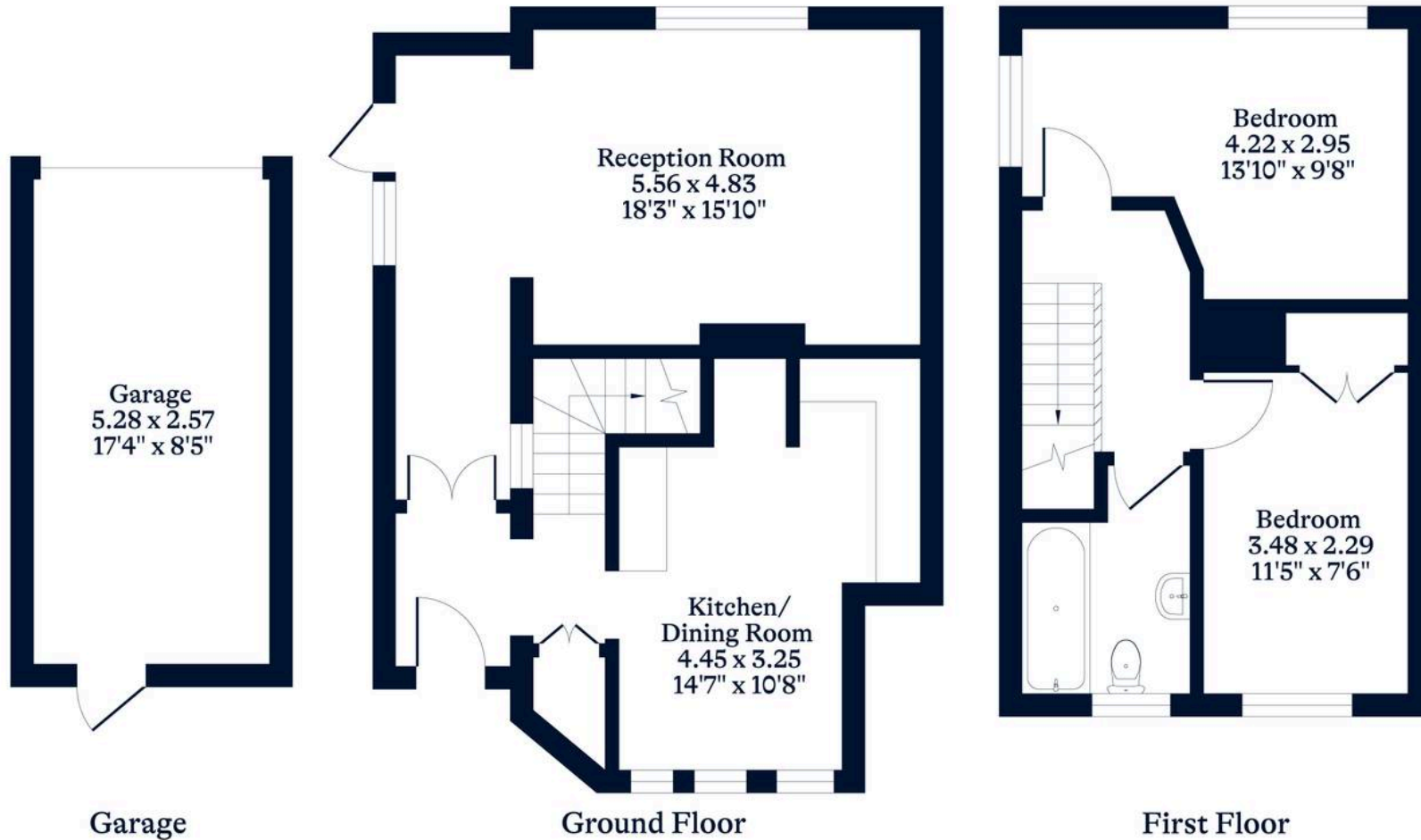


APPROXIMATE FLOOR AREA

House - 72.50 sq m - 781 sq ft
Garage - 13.60 sq m - 147 sq ft
Total - 86.10 sq m - 928 sq ft
(Gross Internal Area)



NOT TO SCALE
This plan is for illustration purposes only



OSBORNEHEATH.CO.UK

This floor plan has been created by Property Shoot Ltd following the RICS code of measuring and is for indicative guidance only. Whilst every attempt has been made to ensure the accuracy of the floor plan contained here, measurements of doors, windows and rooms are approximate and no responsibility is taken for any error, omission or misstatement. Details shown on this floorplan, including all measurements, areas and proportions cannot be guaranteed by either the provider or estate agency and should not be relied upon.