

OH



New Mile Court London Road, Ascot
Guide Price **£500,000**

OSBORNE HEATH



The property has a 21 ft living room, modern separate kitchen, principal bedroom with a modern en suite and built-in wardrobes, second double bedroom with built-in wardrobes and a modern bathroom.

Outside there are two allocated parking spaces and a communal garden.

New Mile Court is a quiet gated development close to Ascot High Street, Ascot Racecourse and walking distance to Ascot Train Station where trains run to London, Reading and Guildford. Other nearby places of interest include The Berkshire Golf Club, Coworth Park, Guards Polo Club, Legoland, The Lexicon, Sunningdale Golf Club, Virginia Water Lake, Wentworth Club, Windsor Castle and Windsor Great Park. By road Ascot is convenient for the M3, M4, M25 and Heathrow Airport.

New Mile Court London Road

Ascot

- Two Double Bedrooms
- Two Bathrooms
- Two Parking Spaces
- Recently Refurbished
- Gated
- Communal Gardens
- Close To Ascot High Street

Council Tax band: F

Tenure: Leasehold

EPC Energy Efficiency Rating: C

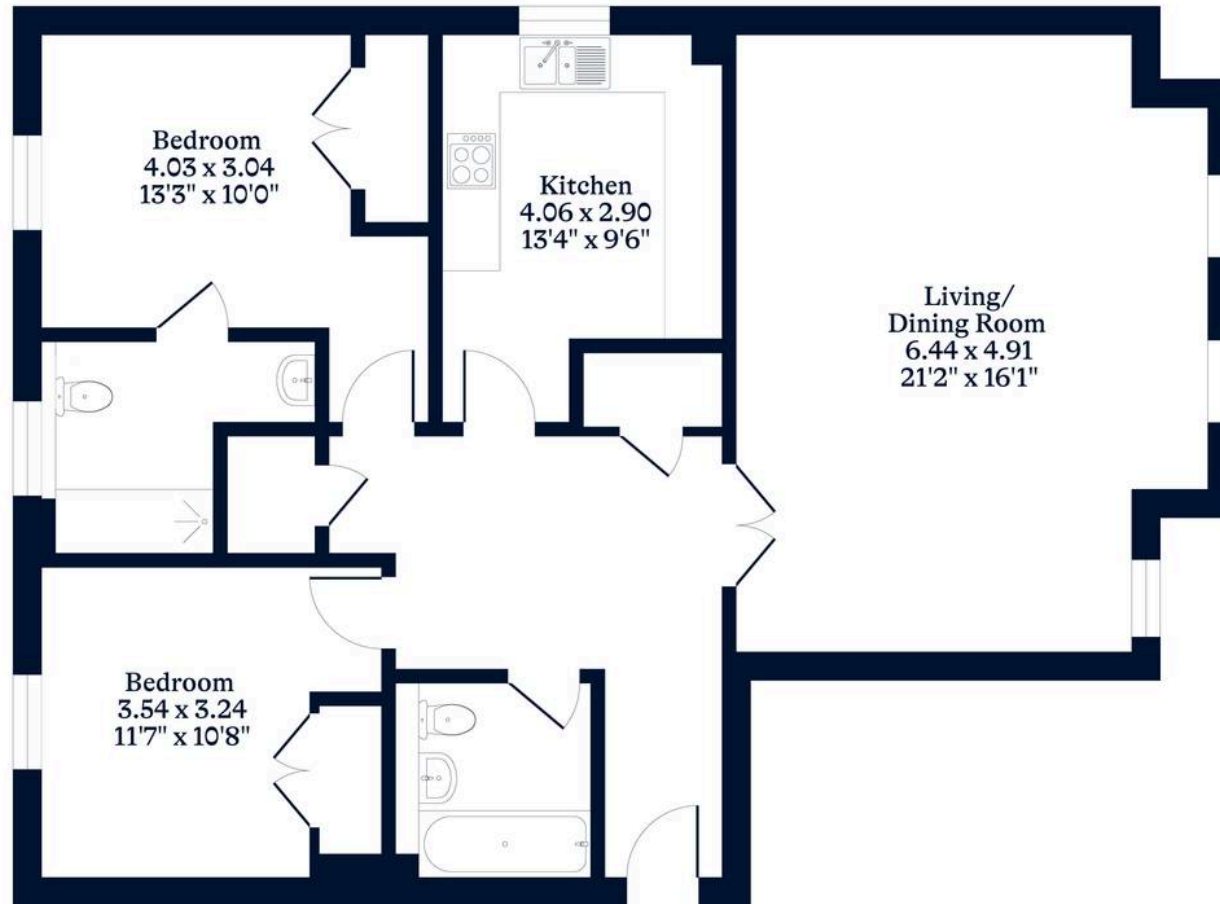
EPC Environmental Impact Rating: C



APPROXIMATE FLOOR AREA
House - 93.90 sq m - 1011 sq ft
(Gross Internal Area)



NOT TO SCALE
This plan is for illustration purposes only



First Floor

OSBORNEHEATH.CO.UK

This floor plan has been created by Property Shoot Ltd following the RICS code of measuring and is for indicative guidance only. Whilst every attempt has been made to ensure the accuracy of the floor plan contained here, measurements of doors, windows and rooms are approximate and no responsibility is taken for any error, omission or misstatement. Details shown on this floorplan, including all measurements, areas and proportions cannot be guaranteed by either the provider or estate agency and should not be relied upon.