

O/H



High Street, Datchet

Guide Price £1,200,000

OSBORNE HEATH



Dating back to the 1600's this home has been extended and restored over time to create a family home.

Downstairs there is a double aspect living room, study, kitchen and dining room both with doors leading out to the gardens and a downstairs WC.

Upstairs there are five bedrooms, including a large main bedroom with potential to add an en suite subject to building regulations, and a four piece family bathroom.

Outside there is parking for multiple vehicles, access to the garage and two gardens.

The Stables is in the centre of Datchet village, close to local shops and the train station where services run to London and Windsor & Eton Riverside. Nearby schools include Churchmead, Eton End and St Mary's. Local places of interest include Ascot Racecourse, Legoland, The Lexicon, River Thames, Windsor Castle, Windsor Great Park and Windsor Racecourse. By road Datchet is convenient for Heathrow Airport, M4 and M25.

The Stables High Street

Datchet,

- Five Bedrooms
- Downstairs WC
- Study
- Driveway
- Character
- Detached
- Garage
- Close To Shops
- Close To Station

Council Tax band: G

Tenure: Freehold

EPC Energy Efficiency Rating: E

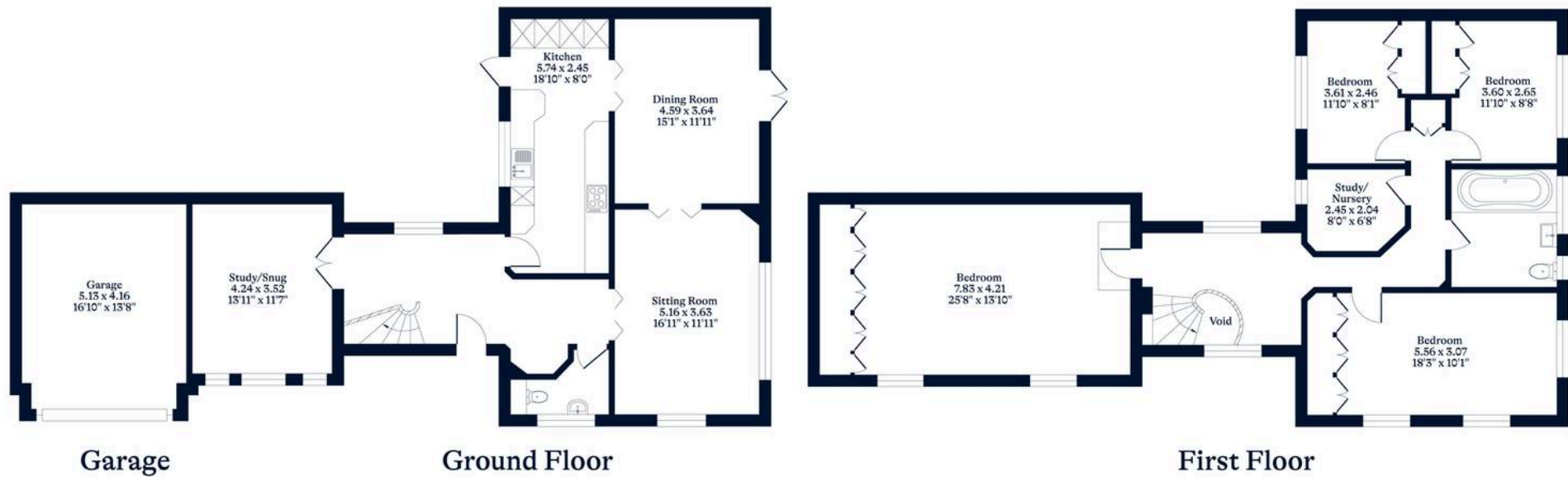
EPC Environmental Impact Rating: E



APPROXIMATE FLOOR AREA
House - 197.00 sq m - 2120 sq ft
Garage - 21.00 sq m - 226 sq ft
Total - 218.00 sq m - 2346 sq ft
(Gross Internal Area)



NOT TO SCALE
This plan is for illustration purposes only



OSBORNEHEATH.CO.UK

This floor plan has been created by Property Shoot Ltd following the RICS code of measuring and is for indicative guidance only. Whilst every attempt has been made to ensure the accuracy of the floor plan contained here, measurements of doors, windows and rooms are approximate and no responsibility is taken for any error, omission or misstatement.

Details shown on this floorplan, including all measurements, areas and proportions cannot be guaranteed by either the provider or estate agency and should not be relied upon.