

110



Church Road, Ascot
Guide Price **£450,000**

OSBORNE HEATH



On the ground floor is a living room, conservatory, kitchen and a downstairs WC.

The first floor has a principal bedroom with built-in wardrobes, family bathroom and a further double bedroom.

Outside is a rear west facing garden with access to allocated parking.

Church Road a small road in-between Lyndhurst Road and Victoria Road, just a few hundred yards from Ascot station where trains run to London Waterloo, Reading and Guildford. The house is within the Charters School catchment area and nearby primary schools include St. Francis and South Ascot Village. Nearby places of interest include Ascot Racecourse, Coworth Park, Guards Polo Club, Legoland, The Lexicon, Wentworth Club and Windsor Great Park. Ascot is also convenient for the M3, M4, M25 and Heathrow Airport.

Church Road

Ascot

- Two Bedrooms
- Two Receptions
- Terrace
- Family Bathroom
- Allocated Parking
- Walking Distance to Train Station
- Walking Distance to High Street
- No Onward Chain

Council Tax band: D

Tenure: Freehold

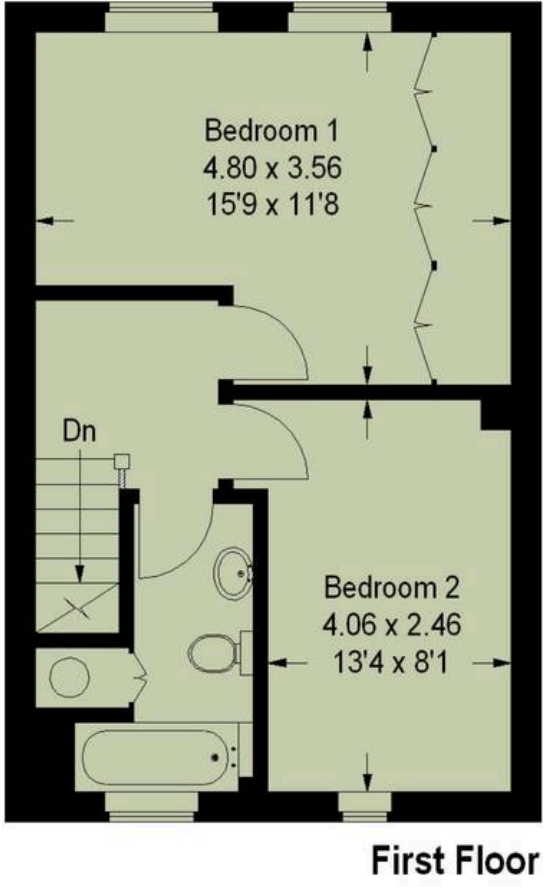
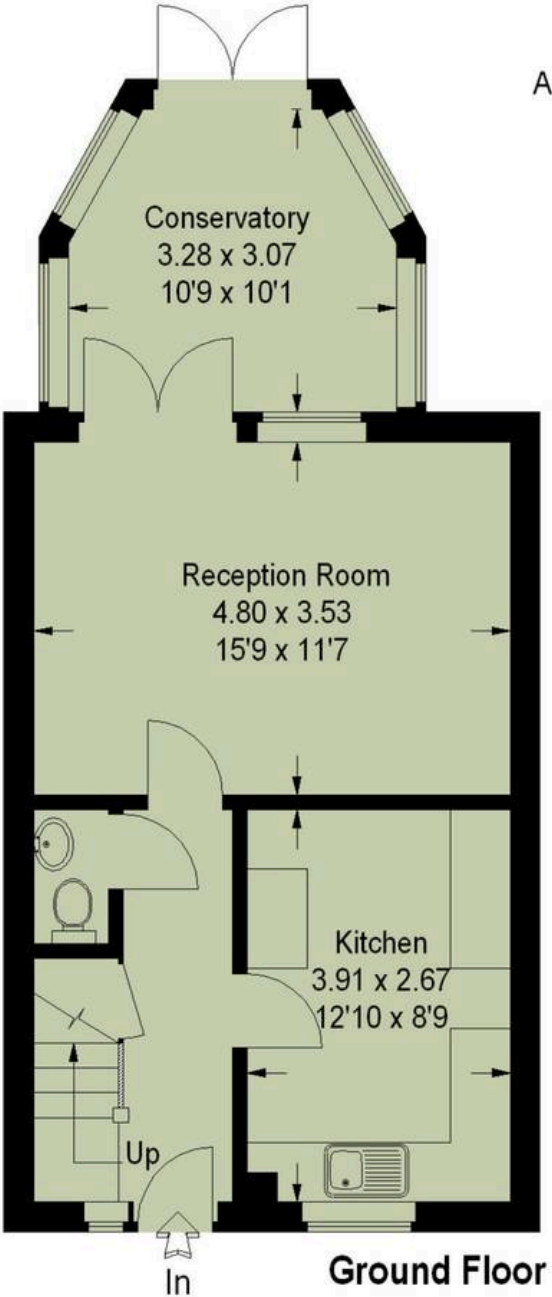
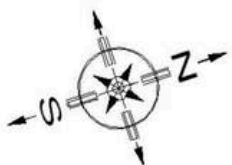
EPC Energy Efficiency Rating: C

EPC Environmental Impact Rating: C





Approximate Gross Internal Area:- 84 sq m / 904 sq ft



Job Ref. 88993

Illustration For Identification Purposes Only. The plan has been created using previous drawings as reference material, therefore the accuracy of information cannot be guaranteed. Not To Scale.